



SENSOLIST



SENSOLIST RTU/36CURRENT

Description

This module is a device to measure the current voltage and other vital parameters in the electrical panel and other current arteries.

By supporting RS-485 port and Modbus protocols, it is possible to connect to all industrial devices.

- Connects to all SENSOLIST RTUs
- Has RTC (Real-Time Clock) with a backup battery
- Supports 32 devices with the Modbus/RTU protocol
- Microcontroller architecture based on ARM-Cortex M4 chips
- Connects multiple devices via the RS-485 port on a two-wire BUS

Features



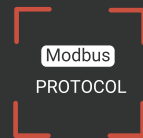
RS-485 INDUSTRIAL



1-WIRE UNI



OUTPUT Transistor



Modbus
PROTOCOL

ASCII/RTU



RAIL Mount

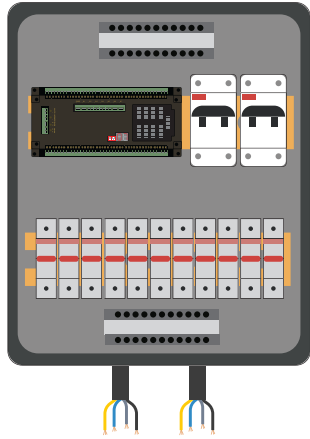
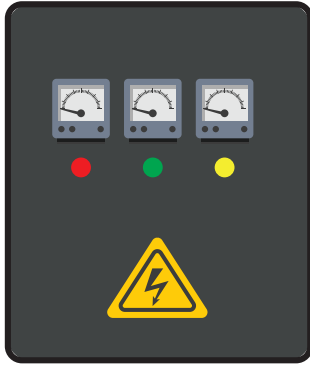


INPUT Dry contact



ARM CORTEX M4

Technical Specification



| General | | |
|------------------------|-------------------------------------------|-----|
| Processor | ARM processor with encryption accelerator | ✓ |
| Memory | - | ✓ |
| Operating System | Embedded RTOS | ✓ |
| Master Protocols | Modbus (RTU/TCP) | ✓ |
| Slave Protocol | Modbus | ✓ |
| Channels | | |
| Communication Channels | RS-485 | 2 ✓ |
| Physical | | |
| Power Supply | 24 VDC | ✓ |
| Packaging | Rack Mounted | ✓ |
| | Wall Mounted | ✓ |
| | DIN-rail Mounts | ✓ |
| Environmental | -40°C to +70°C, %95-5 RH | ✓ |
| Plant Input/Output | | |
| Current | 36 0-80 A | ✓ |
| Power Meter | 3 Phase | ✓ |
| Digital Outputs | 1 TR | ✓ |
| Digital Inputs | 7 | ✓ |
| 1-wire Sensor | 1 T&H Sensor | ✓ |

